



Vineyards, Orchards & Wire Fence Solutions

Trellising, Bracing and Fencing





Contents

Applications

Vineyard Trellising Solutions	page	6
Orchard Trellising Solutions	page	8
Wire Fence Solutions	page	10

Products

Gripple Plus Range	page	12
GP No. 1 & No. 2	page	13
Starter Pack	page	14
GP Fix	page	15
VIT-S	page	16
GPAK Plus W	page	18
GPAK Plus M	page	19
APEX™	page	20
SPT Count	page	21
DPAK	page	22
FPAK	page	23
Concrete Post Kit	page	24
GP90	page	25
Barbed	page	26
T-Clip	page	27
Fencing Pin Kit	page	28

Accessories

Anchoring Tools & Accessories	page	29
-------------------------------	------	----

Technical Advice & Installation

Technical Advice & Installation	page	32
---------------------------------	------	----



Product Led, People Powered

Established in 1989, we are the original innovators and manufacturers of wire joining and tensioning devices, as well as anchoring, bracing and suspension systems that have changed the game for many industries.

With our innovative, engineered solutions, we're helping customers in industries including solar, civil, utilities, and construction to overcome their toughest daily challenges, achieving their goals faster and easier.

We are no ordinary business. We do almost everything differently.

100% owned by our employees, we're also committed to changing the game by making a positive impact in our communities around the world.

Change the Game

1 - 100% employee owned

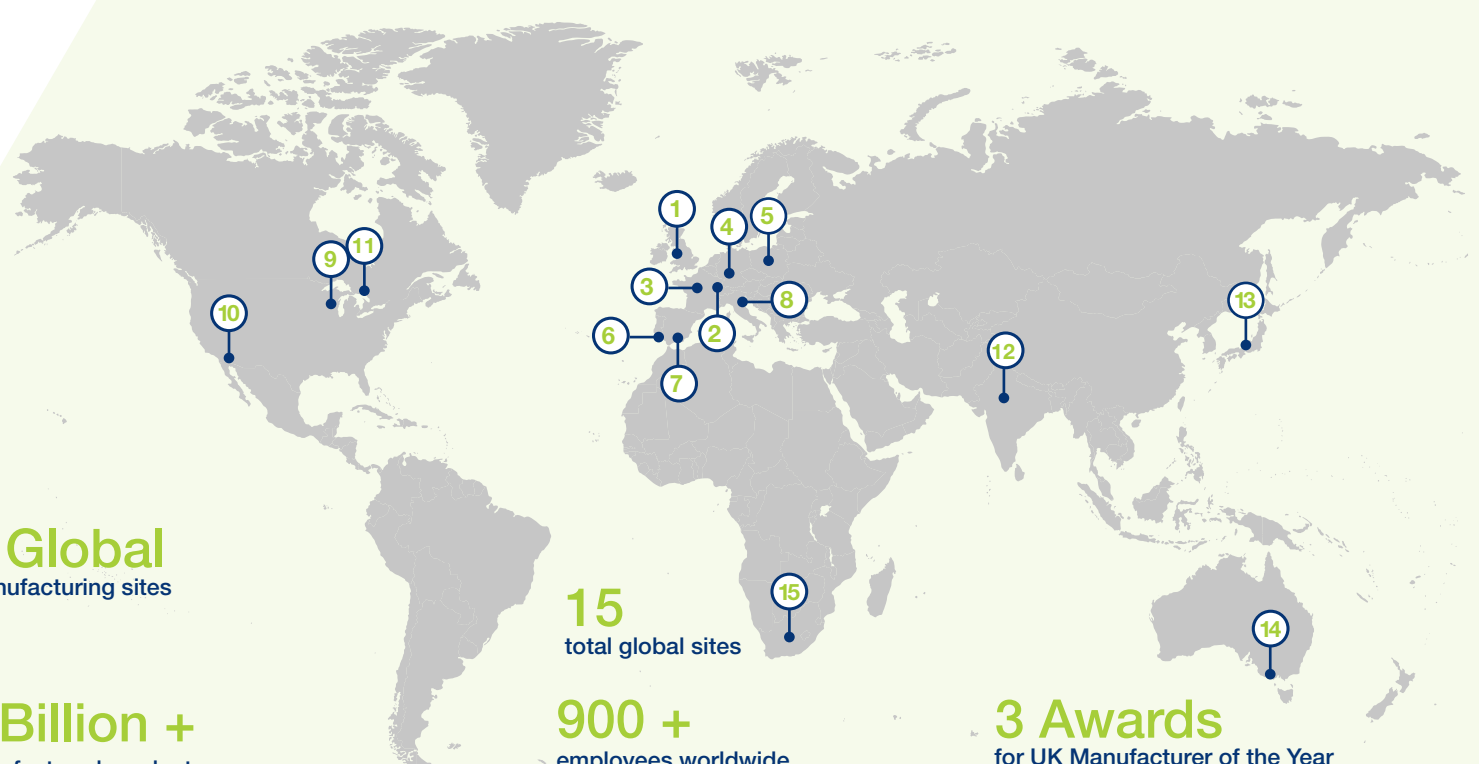
Our empowering employee ownership model means everyone has skin in the game. Success for our global customers means success for us. We are all shareholders, inspired to design, manufacture, and deliver better solutions.

2 - Game changing innovators

Our vision is to engineer game changing products and systems that make a difference for more global customers. To keep us on track, we hold ourselves accountable to deliver a fifth of all sales from new innovations.

3 - Helping customers do more with less

We solve customers' real-world problems with simplified engineered solutions. Whatever the application, our innovations deliver efficient, sustainable solutions that have a positive impact on global customers' routine tasks.



9 Global
manufacturing sites

1 Billion +
manufactured products

15
total global sites

900 +
employees worldwide

3 Awards
for UK Manufacturer of the Year

Changing the Game in 85 Countries Worldwide

4 - Vertically integrated

As an award-winning global manufacturer, we create finished Gripple solutions from components we produce in-house, on machinery we design and build ourselves. We're a trusted partner for our customers, able to deliver quality, reliability, and value.

5 - A force for good

It's the Gripple way to do business differently. Not just to deliver profit, but to share the benefits of global sustainable growth with our customers, communities, and employee-owners.

Gripple United Kingdom

1 Global Head Office – Sheffield, UK

Gripple Europe:

- 2 Gripple Europe Head Office – Obernai, France
- 3 Paris, France
- 4 ABlar, Germany
- 5 Warszawa, Poland

Europe Partners:

- 6 Gripple, Portugal
- 7 Gripple, Spain
- 8 Gripple, Italia

Gripple INC:

- 9 Gripple INC Head Office – Aurora, Illinois
- 10 Los Angeles, California

Gripple Rest of the World:

- 11 Toronto, Canada
- 12 New Delhi, India
- 13 Kobe, Japan

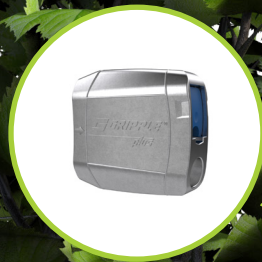
Rest of the World Partners:

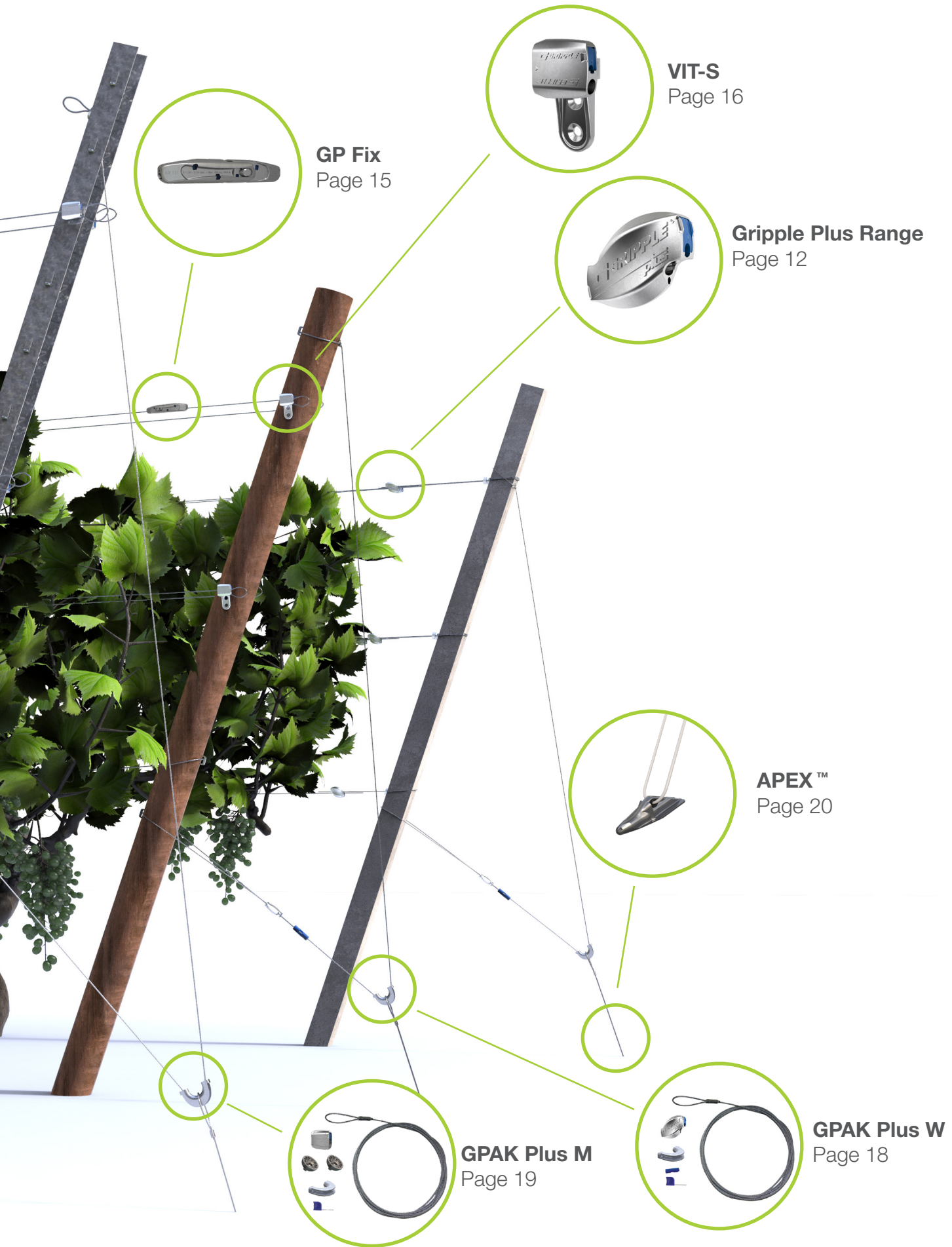
- 14 Gripple Australia – Victoria
- 15 Gripple South Africa

Vineyard Trellising Solutions



GP No.1 & No.2
Page 13





GP Fix
Page 15



VIT-S
Page 16



Gripple Plus Range
Page 12



APEX™
Page 20



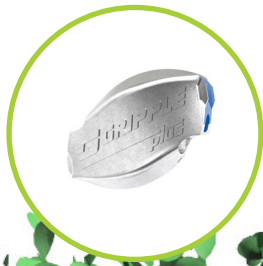
GPAK Plus M
Page 19



GPAK Plus W
Page 18

Orchard Trellising Solutions

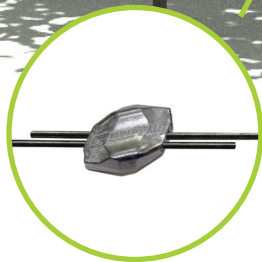
Gripple Plus Range
Page 12



GPFix
Page 15



Jumbo
Page 12



DPAK
Page 22





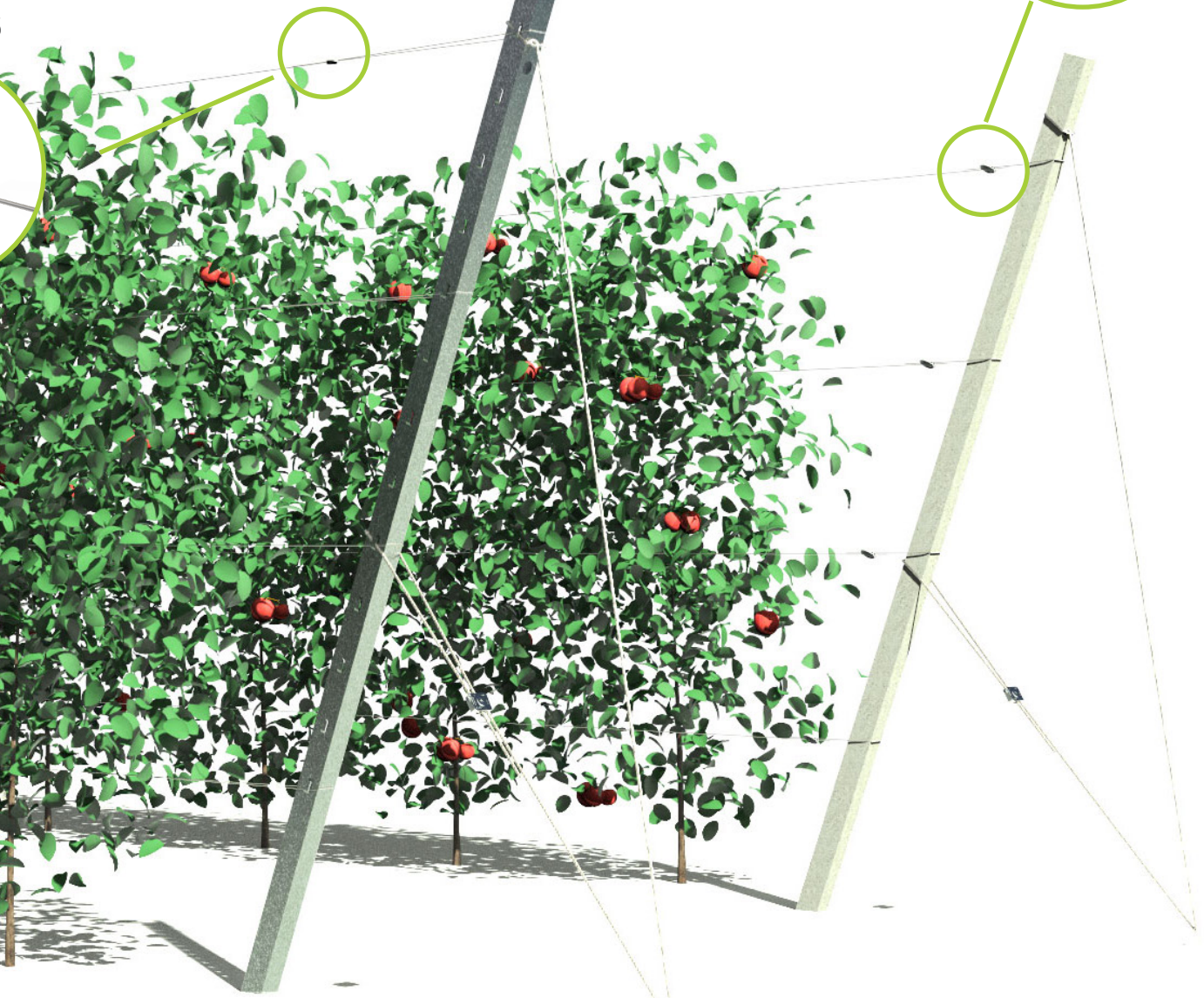
Tools & Accessories
Page 29



GP90
Page 25

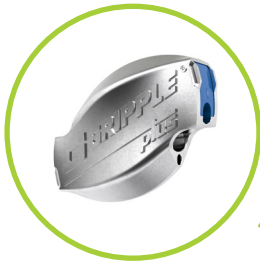


Concrete Post Kit
Page 24



APEX™
Page 20

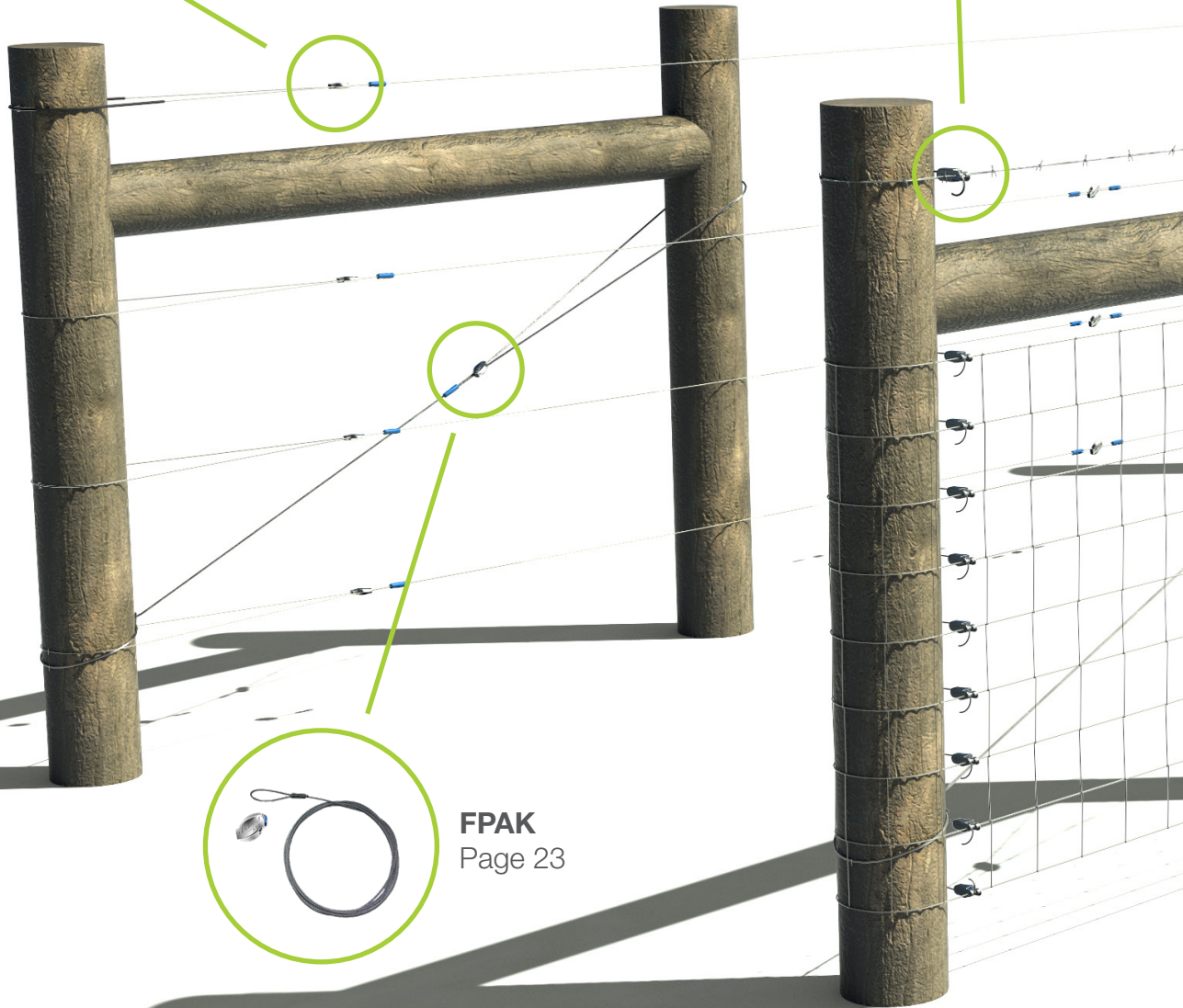
Wire Fence Solutions



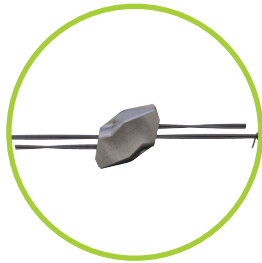
Gripple Plus Range
Page 12



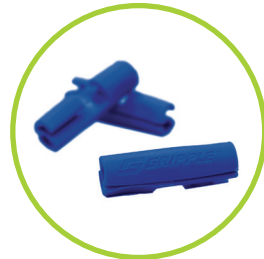
T-Clip
Page 27



FPAK
Page 23



Barbed
Page 26



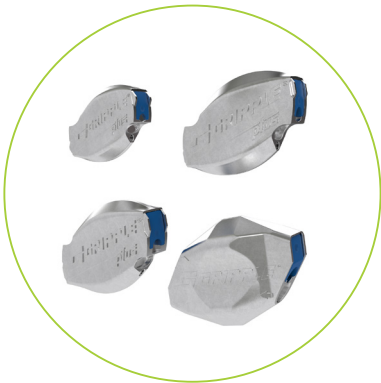
Twister
Page 31



Wire repair using Gripple Plus Medium.

Gripple Plus Range

The Gripple Plus range of wire joiners and tensioners is suitable for all trellis applications.



Gripple Plus Range of wire joiner and tensioners.

- Join and tension in one
- Eliminates tying and knotting wires, reducing installation time
- Ideal for use on high tensile and mild steel trellis wire
- Designed for high load holding and corrosion resistance
- Easily re-tensioned year-after-year
- Adjustable and unlockable

Product	Maximum Working Load	Wire Range	Part code	Bag quantity	Box quantity
Gripple Plus Small	300 kg	1,40 mm - 2,20 mm	GPS-BB	20	300
Gripple Plus Medium	400 kg	2,00 mm - 3,25 mm	GPM-BB	20	200
Gripple Plus Large	600 kg	3,25 mm - 4,20 mm	GPL-BB	20	160
Gripple Jumbo*	600 kg	2,50 mm - 3,15 mm	JUM-BB	20	140

*The Gripple Jumbo is not releasable

For tips and instructions on how to install, refer to the technical section on pages 32, 33 & 34.



Installation



Adaptor - For use when the tensioner is installed on the inside of the post.

GP No. 1 & GP No. 2

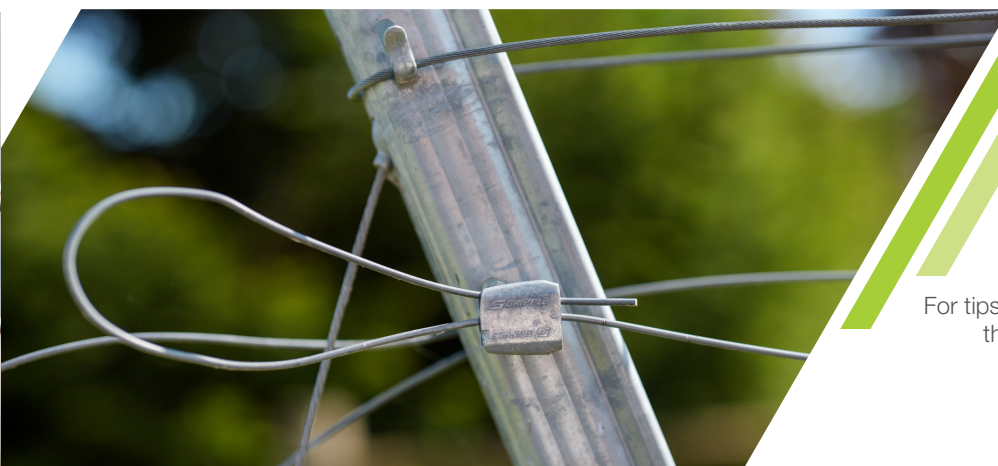
The Gripple GP No. 1 and GP No. 2 are designed with a flat leading edge to create a stable end stop for trellises which use metal end posts



- Terminate and tension in one
- Ideal for use on steel wire and nylon monofilament
- High grade ceramic roller for corrosion resistance
- Spare integral channel allows safe tail wire return
- Tensioned using a Torq Tool and Adaptor in recessed applications
- Adjustable and unlockable

Product	Maximum Working Load	Wire Range	Part code	Bag quantity	Box quantity
GP No. 1	400 kg	1,80 mm - 3,00 mm	GP1-BB	20	300
GP No. 2	600 kg	3,00 mm - 4,20 mm	GP2-BB	10	140

GP No.1 - Installed on a metal post.



For tips and instructions on how to install, refer to the technical section on pages 32, 33 & 34.



Wire repair using with a Gripple Plus Medium and a Torq Tool 5

Starter Pack

The Gripple Plus range of wire joiners and tensioners is suitable for all trellis applications. This kit comes with a tensioning device and a batch of Gripple tensionners of your choice.



- Ideal to discover our products
- Tensioning devices are lightweight and compact
- Built with high quality materials
- For more information about the Gripple tensioning device, refer to page 29

Product	Tensionner	Maximum Working Load	Wire Range	Part code	Box quantity
Torq Tool 5 400 kg	50 Gripple Plus Medium	400 kg	2,00 mm - 3,25 mm	WJTK5-GPM	4

Torq Tool 5 Starter Pack





The two piece design allows the repairer to add secure gripping points at either side of the broken wire; the pieces are then simply pulled together and the snap fit mechanism provides a quick and easy join.

GP Fix

GP Fix offers a simple, fast and safe solution for the quick repair of trellising wires. The innovative two-piece design pushes onto either end of a broken wire, providing extra grip and reach to reattach wires with an easy 'snap' fit.

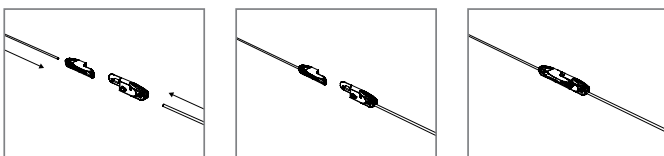


- Simple snap fit installation ensures a quick on the spot repair
- Provides extra reach on the broken ends, reducing physical effort
- Corrosion resistant zinc alloy and ceramic rollers for long lasting repairs
- Low, smooth profile and enclosed wires, reducing the risk of catching
- Ideal for use with Gripple Plus Medium or GP No. 1 when re-tensioning wire at end posts

Product	Maximum Working Load	Wire Range	Part code	Bag quantity	Box quantity
GP Fix	400 kg	1,80 mm - 3,20 mm	GPFX1-BB	8	64



Installation



For tips and instructions on how to install, refer to the technical section on pages 32, 33 & 34.



Bottom. VIT-S - Installed on metal post



VIT-S - Installed on wooden post.

VIT-S

The Gripple VIT-S is the quick and easy way to manage your fruiting wires. VIT-S works directly with metal and wooden end posts, replacing difficult and unreliable chains. VIT-S can be installed directly onto metal end posts or on wooden & metal posts when bought as a kit with the bespoke VIT-S Hook.



- Replaces cumbersome chains
- Manage the fruiting wires on both metal and wooden end post trellising systems
- Allows wires to be moved independently during the growing season
- Wires easily dropped to the ground for pruning
- Tension is easily applied by hand
- Adjustable and unlockable

Product	Maximum Working Load	Wire Range	Part code	Bag quantity	Box quantity
VIT-S for Metal posts	400 kg	1,40 mm - 2,60 mm	VITS-BB	20	200
VIT-S for Wooden & Metal posts			VITSK-BB	10	100



The VIT-S can be installed directly onto metal head posts.
The VIT-S Kit can be installed onto metal and wooden posts using the hook.



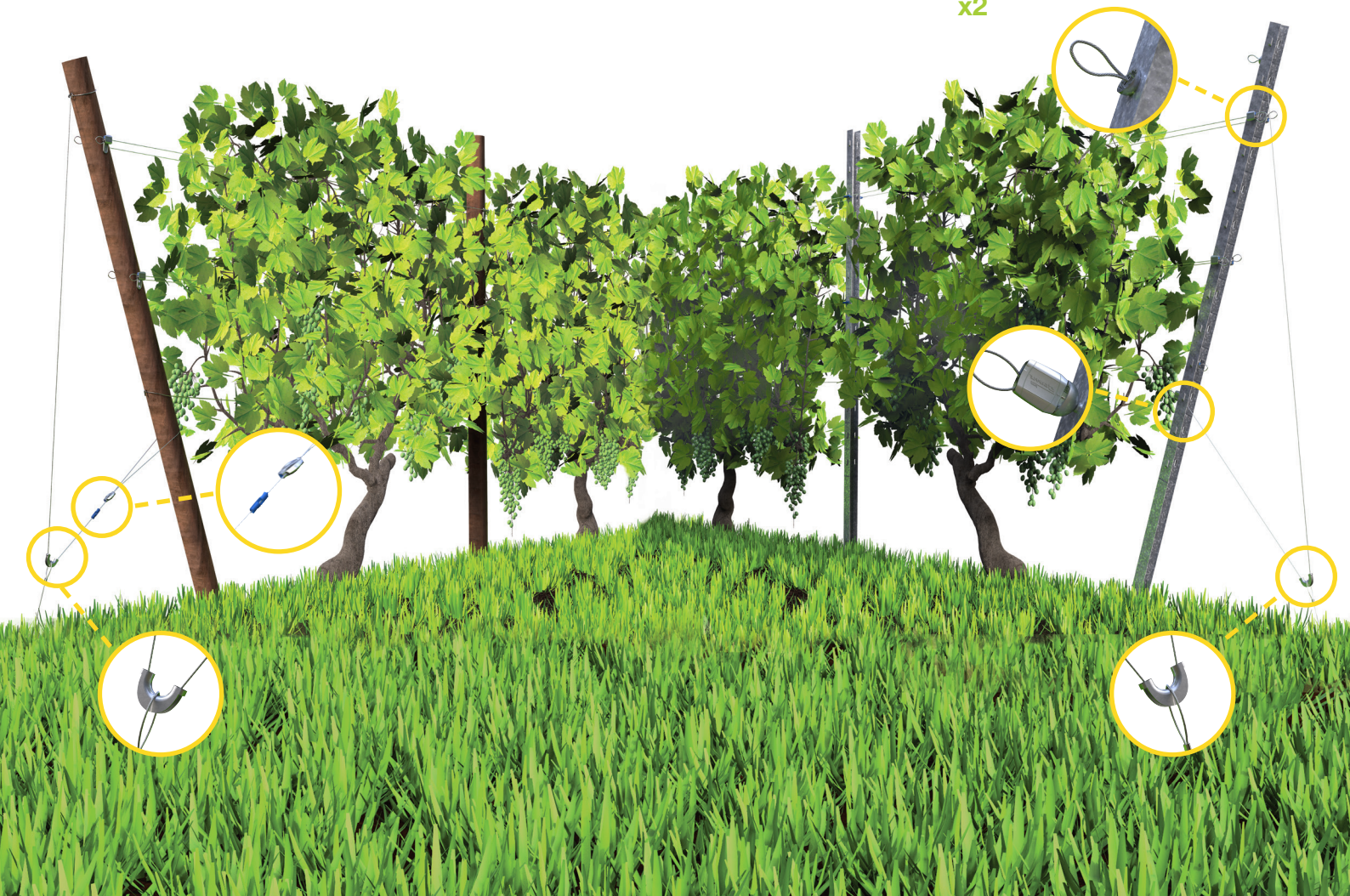
Go for the **PLUS VERSION**

GPAK Plus W
for Wooden posts

GPAK Plus M
for Metal posts



x2





GPAK Plus W installed on a wooden post

GPAK Plus W

GPAK Plus W is designed for wooden and concrete post bracing. Supplied as a ready to use kit comprising a pre-cut length of wire rope, a Grippler Plus Medium and a Twister, it includes a Thimble designed to protect the wire rope against shearing. GPAK Plus 4 is a bracing kit for all types of posts a pre-cut length of wire rope, a Grippler Plus Large.



- Adjustable and unlockable
- Dual brace points for even load transfer
- Easily re-tensioned year-after-year
- Manufactured with zinc aluminium wire rope for corrosion resistance
- Consistent, professional finish

Product	Maximum Working Load	Wire Rope Diameter	Wire Rope Length	Part Code	Bag Quantity	Box Quantity
GPAK Plus W No. 3 with Zinc Aluminium wire rope	400 kg	3 mm	2,5 m	GPAK-PW3-2.5M	-	20
			3,5 m	GPAK-PW3-3.5M	-	20
			4,5 m	GPAK-PW3-4.5M	-	20
GPAK Plus W No. 4 with Zinc Aluminium wire rope	600 kg	4 mm	5 m	GPAK-PW4-5M	-	6
			6 m	GPAK-PW4-6M	-	6





GPAK Plus M - Designed for metal post bracing

GPAK Plus M

GPAK Plus M is the ideal product for a long lasting metal post bracing. Supplied as a ready-to-use kit comprising a pre-cut, fused length of wire rope and a Gripple tensioner, it includes a thimble and two wire protectors designed to create a three point protection against shearing.



- Adjustable and unlockable
- Dual brace points for even load transfer
- Manufactured with zinc aluminium wire rope for corrosion resistance
- Supplied with two wire protectors to avoid damaging the wire rope inside the metal post holes
- Consistent, professional finish
- Easily re-tensioned year-after-year

Product	Maximum Working Load	Wire Rope Diameter	Wire Rope Length	Part Code	Bag Quantity	Box Quantity
GPAK Plus M No. 3 with Zinc Aluminium wire rope	400 kg	3 mm	2,5 m	GPAK-PM3-2.5M	-	20
			3,5 m	GPAK-PM3-3.5M	-	20
			4,5 m	GPAK-PM3-4.5M	-	20
GPAK Plus M No. 4 with Zinc Aluminium wire rope	600 kg	4 mm	3 m	GPAK-PM4-3M	-	8
			4 m	GPAK-PM4-4M	-	6



For tips and instructions on how to install, refer to the technical section on pages 32, 33 & 34.



APEX™

The APEX Anchor creates a secure, fixed anchoring point below the ground. No pre-digging or ground preparation is required, dramatically reducing installation time.



- Designed for drive efficiency and maximum load capacity
- Streamlined profile for minimal soil disturbance
- Suitable for a variety of soil types and environmental conditions
- Speed of installation delivers significant time and labour savings
- Three tendon types for maximum corrosion resistance

Product	Maximum Working Load	Diameter	Length	Part Code	Bag Quantity	Box Quantity	
APEX 3 with Fibre Tendon	Max working load depends on the type of soil See the SPT results on page 21.	4,8 mm	0,9 m	GA3-FT-0.9M		16	
		4,8 mm	1,5 m	GA3-FT-1.5M		12	
APEX 4 with Fibre Tendon		4,8 mm	0,9 m	GA4-FT-0.9M		10	
		4,8 mm	1,5 m	GA4-FT-1.5M		8	
		6,4 mm	0,9 m	GA4-FT-6MM-0.9M		4	
		6,4 mm	1,5 m	GA4-FT-6MM-1.5M		4	
APEX 5 with Fibre Tendon		8,4 mm	0,9 m	GA5-FT-0.9M		4	
		8,4 mm	1,5 m	GA5-FT-1.5M		4	
APEX 3 with Rigid Tendon			6,0 mm	0,9 m	GA3-RT-0.9M		5
APEX 4 with Rigid Tendon			6,0 mm	0,9 m	GA4-RT-0.9M		5

SPT Count & Anchor Performance

The Standard penetration test (SPT) is widely used to determine the strength and deformation properties of the course soil. Approximate correlation of properties of drained granular soil are:

Very Loose	SPT 0-4
Loose	SPT 4-10
Medium Dense	SPT 10-30
Dense	SPT 30-50
Very Dense	> 50

These figures can then be used to obtain typical bulk unit weight for each soil.

This information is then used to predict APEX Anchor Performance in relation to the conditions described.

The following tables are derived from idealised theoretical calculations and should be used as a guide only. The variability of soil types should always be taken into account and on-site testing should always be carried out in order to obtain more accurate results.

The longevity depends on location factors, soil, water & climate conditions as well as the local risk of erosion on site.

Soil Density	APEX 3 Anchor Performance (kg)		APEX 4 Anchor Performance (kg)		APEX 5 Anchor Performance (kg)	
	Install Depth 0,9 m	Install Depth 1,5 m	Install Depth 0,9 m	Install Depth 1,5 m	Install Depth 0,9 m	Install Depth 1,5 m
Very Loose	105	152	197	323	612	918
Loose	173	279	315	534	963	1 444
Medium Dense	487	845	796	1 525	2 503	3 755
Dense	1 184	2 271	1548	3 765	4 877	7 316
Very Dense	1 634	3 380	1 700	5 270	6 000 +	9 000 +
Tendon Break						
Fiber tendon	600 kg		1 500 kg		3 000 kg	
Rod tendon	600 kg		600 kg		n/a	

APEX 3



APEX 4



APEX 5





DPAK - Installed in a loop format in an orchard.

DPAK

The DPAK is the ideal solution for professional bracing of end posts in arboriculture. Supplied in a kit consisting of a length of fused wire rope with a crimped loop and a Gripple tensioner, it is ready to use.



- A quick installation on all types of posts
- Two guy points for even load distribution and durability of your posts
- Mechanical resistance adapted to the loads of arboriculture
- Adjustable and unlockable
- Easy to re-tension year-after-year
- Zinc Aluminium wire rope for a better resistance to corrosion
- Clean and professional finish

* Gripple recommends to use its cutter to cut the wire in its kits in order to keep them in the best condition possible.

Product	Maximum Working Load	Wire Diameter	Wire Rope Length	Part Code	Bag quantity	Box quantity
DPAK 4	750 kg	4 mm	4 m	DPAK-D4-4M	-	4
DPAK 6	1 750 kg	6 mm	4 m	DPAK-D6-4M	-	4
			5 m	DPAK-D6-5M		
			6 m	DPAK-D6-6M		
			7 m	DPAK-D6-7M		
			8 m	DPAK-D6-8M		
DPAK 8	2 800 kg	8 mm	8 m	DPAK-D8-8M	-	2



FPAK

The Fencing Post Anchor Kit (FPAK) is supplied as ready-to-use kit comprising a pre-cut, fused length of wire rope and a Gripple tensioner. Ideal for anchoring and structural bracing in fencing applications.



- A quick installation on all types of posts
- High load capacity
- Adjustable and unlockable
- Easy to re-tension year-after-year
- Zinc Aluminium wire rope for a better resistance to corrosion
- Clean and professional finish

Product	Maximum Working Load	Wire Diameter	Wire Rope Length	Part Code
FPAK	400 kg	3 mm	3,5 m	FPAK-C3-3.5M



For tips and instructions on how to install, refer to the technical section on pages 32, 33 & 34.



Concrete Post Kit installed around a concrete post

Concrete Post Kit

The Gripple Concrete Post Kit is the complete solution to quickly and securely fasten trellis wires to all sizes of concrete end posts.



- Ready-to-use kit for quick installation
- Versatile pre-feruled wire rope loop fits all sizes of concrete post
- Manufactured with 1 x 19 zinc aluminium wire rope for corrosion resistance
- Squeeze-fit collar easily secures kit prior to tensioning
- Includes Gripple Plus Medium tensioner; easily re-tension year-after-year
- Adjustable and unlockable

Product	Maximum Working Load	Wire Diameter	Wire Rope Length	Part code	Bag quantity	Box quantity
Concrete Post Kit	400 kg	2 - 3,25 mm	1,2 m	GPOST3-KIT-1.2M-BB	-	20





GP90

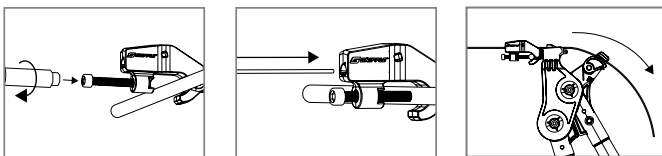
The GP90 is designed to replace the traditional knot used in orchards and greenhouses to create overhead catenaries. Made with a built-in screw, it adapts unto any boundary cable or bar, allowing quick and effortless creation of a perpendicular grid.



- Made to create overhead structures for cloth/net support, crop/down wires, or fruit canopy
- Eliminates tying & knotting of T-joins and other complex joining methods
- Join and tension in one, in under one minute
- Up to 600 kg line load in case of wind lift or heavy crop weight
- Adjustable and unlockable

Product	Maximum Working Load	Boundary Wire range	Line Wire range	Part code	Bag quantity	Box quantity
GP90	600 kg	6 mm - 16 mm	1,8 mm - 4,0 mm	GP90-BL	-	60
				GP90-BB	4	40

Installation



For tips and instructions on how to install, refer to the technical section on pages 32, 33 & 34.



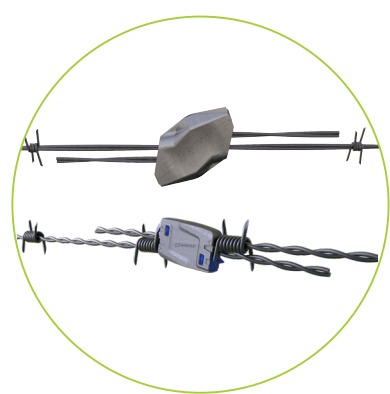
Barbed on mild steel wire.



Barbed for High Tensile Barbed wire

Barbed

The Gripple Barbed takes the hassle out of joining and knotting barbed wire creating a secure installation.



- Eliminates tying and knotting wires, reducing installation time
- Join and tension in one
- Easily re-tensioned year-after-year
- Ideal for use on high tensile and mild steel wire
- High grade ceramic roller for corrosion resistance

Product	Maximum Working Load	Wire Range	Part code	Bag quantity	Box quantity
Barbed Mild Steel	150 kg	2 x 2,00 mm 2 x 2,50 mm	BRB-BB	20	200
Barbed High Tensile	400 kg	1,57 mm - 2,00 mm	HT-BRB-BB	20	140

For tips and instructions on how to install, refer to the technical section on pages 32, 33 & 34.





T-Clip 2 - Used to terminate barbed wire

T-Clip

The Gripple T-Clip securely fastens fencing wire at an end post. Easily installed without the need to tie or knot wire.



- Eliminates tying and knotting wires, reducing installation time
- No need to cut and remove vertical wire
- The twist on action provides a secure termination
- High grade ceramic roller for corrosion resistance
- Two sizes available for both stock fencing or barbed wire applications

Product	Wire Type	Wire Diameter	Part code	Bag quantity	Box quantity
T-Clip 1	Plain wire	1,80 mm - 3,25 mm	TC1-BB	20	200
	High tensile barbed	2 x 1,60 mm - 2 x 1,70 mm	TC1-BB	20	200
T-Clip 2	Plain, Field, Electric	3,25 mm - 4,20 mm	TC2-BB	10	100
	Mild steel barbed	2 x 1,80 mm - 2 x 2,50 mm	TC2-BB	10	100

Load dependent on accompanying Gripple Plus or Barbed tensioner. Never tension T-Clip directly.



Fencing Pin Kit used on a garden fence



Fencing Pin

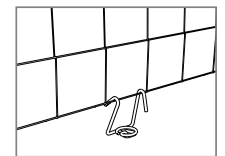
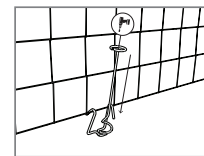
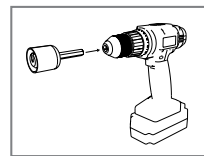
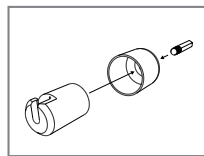
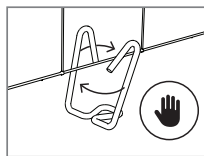
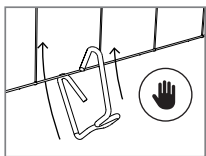
This fencing accessory will quickly and easily secure and finish fencing runs on undulating ground, or where there is a risk of unwanted wildlife intrusions.



- Simple, quick installation using electric drill and drive tool
- Alternatively drive the Fencing Pin to fix the fence apron securely in place
- Superior pull out performance compared to traditional pins and stakes
- Twist action for easy installation, and prevents removal by livestock
- Fencing Pin Kit and installation tool are sold separately

Product	Soil Type	Part code	Bag quantity	Box quantity
Fencing Pin Kit	Tough soil	FENCE-TL-P2	-	40
Installation Tool	-	TL-P1-TOOL-STD	-	1

Installation



Anchoring Tools & Accessories



Wire Cutter

The Wire Cutters are suitable for cutting high tensile wire or wire rope up to 4 mm. The spring loaded non-slip handles make it easy to use and the hardened steel jaws deliver great results.

Part code: CUTTER-GRIPPLE

Order amount: 1



Large Cutter - 6mm

The Large Cutters are suitable for cutting high tensile wire or wire rope up to 6 mm.

Part code: CUTTER-6MM

Order amount: 1



Large Cutter - 8 mm

The Large Cutters are suitable for cutting high tensile wire or wire rope up to 8 mm.

Part code: CUTTER-8MM

Order amount: 1



Torq Tensioning Tool - For vineyards 400 kg

Compact, easy to handle, operate and carry. Apply tension easily with the 6:1 gear drive mechanism with integral tension gauge for precision tensioning up to 400 kg.

Part code: TOOL-5-SINGLE

Order amount: 1



Contractor Tool

The Contractor Tool allows you to tension each line wire individually, optimising the life of your fence.

Part code: TOOL-7-SINGLE

Order amount: 1

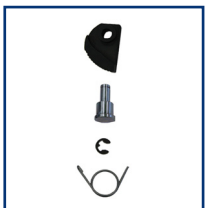


Contractor Tool - For orchards

This metal tensioning tool can be used for all DPAK, particularly DPAK 8 mm. It enables a quick and efficient tensioning of the end post bracing cable.

Part code: TOOL-7XL-SINGLE

Order amount: 1



Cam Set for Tool

To replace wearing parts from the Torq Tool.

Part codes:

CAMG-BB (for the Tensioning Tool TOOL-5-SINGLE)

CAM7-BB (for the Contractor Tool TOOL-7-SINGLE)

Order amount: 1



Adaptor

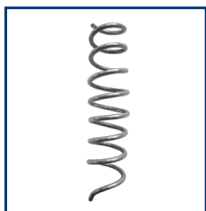
With the addition of the Adaptor, the Torq Tool can be used in recessed applications.

See page 13.

Part code: TORQADP-BB

Order amount: 1 unit

Anchoring Tools

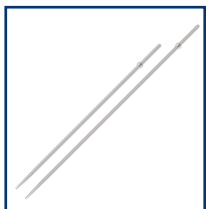


Protector for the APEX Fibre tendon

Brings a mechanical protection to the tendon of the APEX Fibre

Part codes: GA-FT-P

Order amount: 100



Drive Tools

High strength rod specifically engineered for easy installation of APEX anchors. Designed to be robust for re-use.

Part codes: DR-34-1.4M (APEX 3 or 4 - 1 m) ; DR-34-1.8M (APEX 3 or 4 - 1,5 m) ; DR-5-1.8M (APEX 5 - 1,5 m)

Order amount: 1



JackJaw®

Multi-Function tool extracts drive tools and load locks the APEX anchor system.

Part codes: JACKJAW

Order amount: 1



Loop Puller

Ideal tool to activate the APEX anchors in the ground. Can be used by itself or with the JackJaw®.

Part code: TOOL-INSTANT-SET

Order amount: 1

Accessories



Setting Key

The Setting Key allows Gripple tensioners to be repositioned on the wire before tension is applied. To use, simply insert the key into the small hole adjacent to the main channel, releasing the roller and allowing the tensioner to move freely.

Part code: GPKEY-BB

Order amount: 100

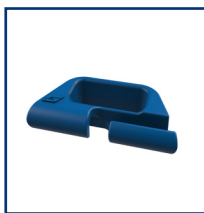


Twister

The Twister secures the tail wire. Making the installation completely safe and hazard free, it gives a tidy and neat finish. Use on mild steel or high tensile wire from 1 mm to 3 mm.

Part code: BTWIST-BB

Order amount: 100



Wire Guard

The Gripple Wire Guard eliminates metal on metal contact between the wire and intermediate posts. This protects the wire and prolongs the life of the trellis.

Part code: WG-BB

Order amount: 100

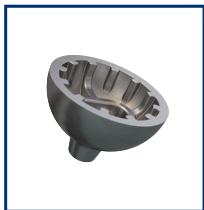


VIT-S Hook

The VIT-S Hook accessory (used in conjunction with the VIT-S Kit) allows for the addition of further fixing points on end posts for use as wires are raised through the growing season.

Part code: VHOOK-BB

Order amount: 20



Anti-shearing accessory

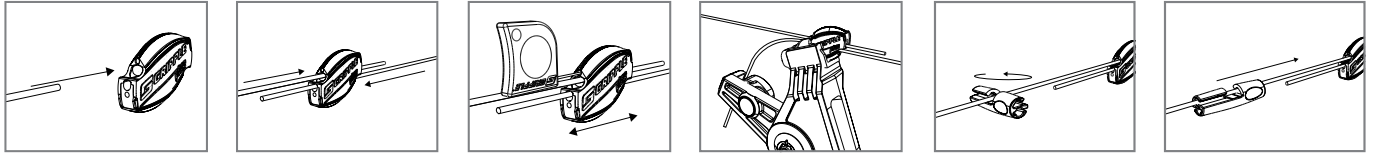
Wire protector for GP1 to prevent the wire rope from getting damage by the friction against the metal post

Part code: WP-BB

Order amount: 300

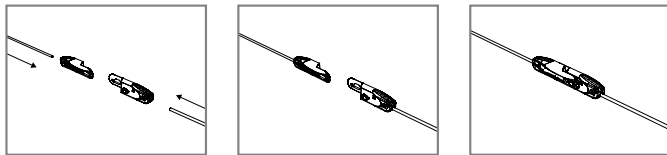


Gripple Plus range - Installation (featuring Setting Key adjustment and Twister)



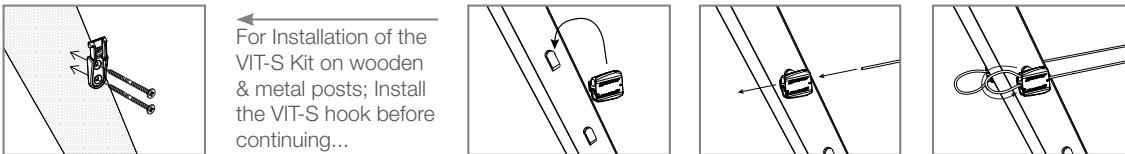
- Apply and re-apply tension with a tensioning tool (leave at least 75 mm tail wire)
- Reposition before applying tension using a Setting Key
- A Twister tidies tail wires and can be removed and re-attached to allow for re-tensioning

GP Fix - Installation



- Use the flag key to release GP Fix if extra wire needs to be trimmed to make the repair tight.

VIT-S - Installation

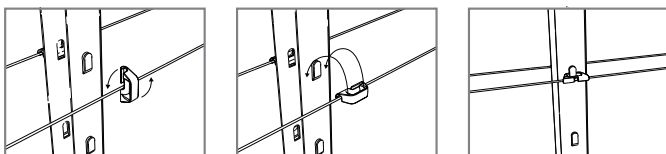


← For Installation of the VIT-S Kit on wooden & metal posts; Install the VIT-S hook before continuing...



- Loop the tail wire back into the unit to provide a safe, neat finish
- Install additional VIT-S Hooks to allow positioning up and down the post

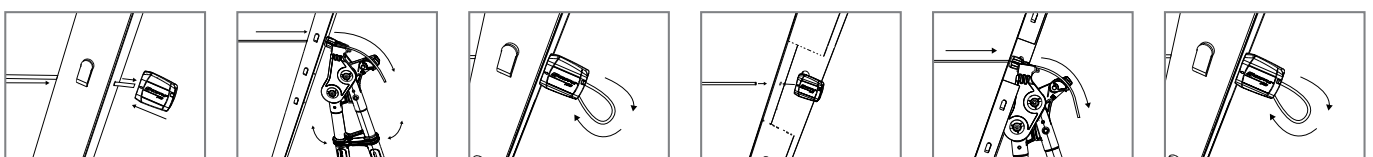
Wire Guard - Installation



- Wire Guard can also be used on wooden & metal posts when used in conjunction with the VIT-S Hook

GP No. 1 & No. 2 - Installation

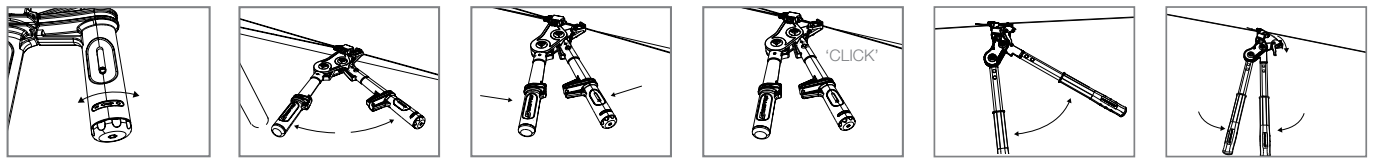
Adaptor (inside metal post)



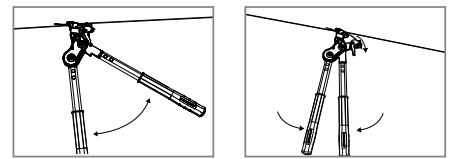
- If the post is installed 'open-side-out', there is a handy adaptor that can be fitted to the tool to make tensioning easier



Torq Tool - Installation

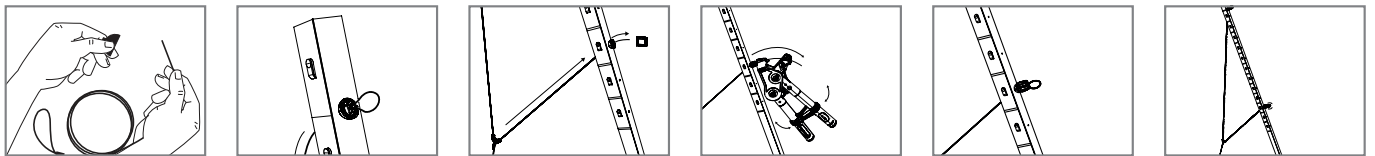


Contractor Tool



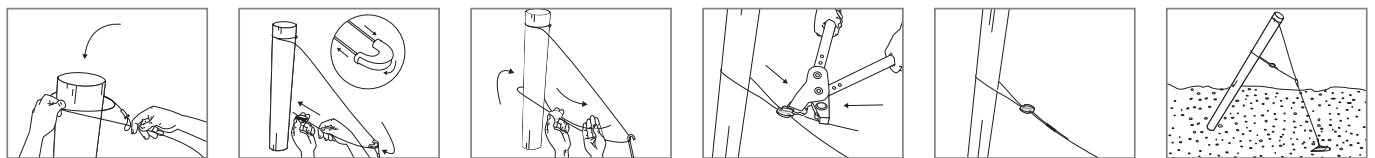
- Never tension above the wire manufacturer's recommendation

GPAK Plus M - Installation (metal post)



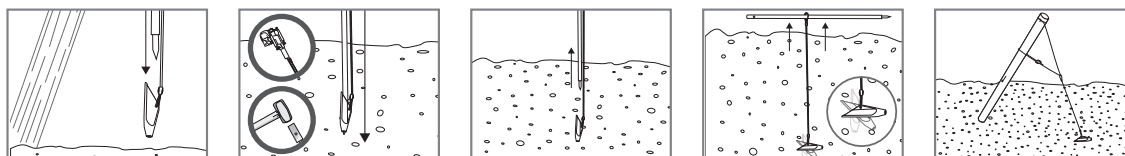
- Combine with an Anchor for a complete anchoring solution that's simple and fast to install.

GPAK Plus W - Installation (wooden post)



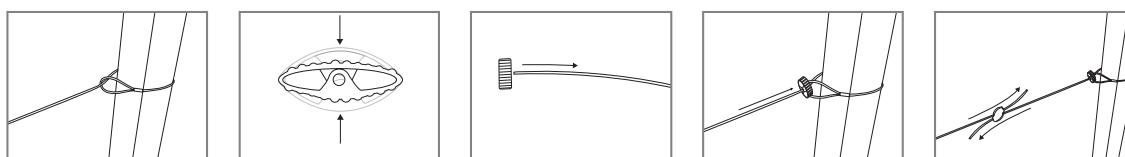
- Combine with an Anchor for a complete anchoring solution that's simple and fast to install.

APEX Anchor - Installation



- Always drive the APEX Anchor fully into the ground, to a depth of at least 1 m
- For even quicker installation of Grippler's Anchors, use the Grippler Petrol Driver

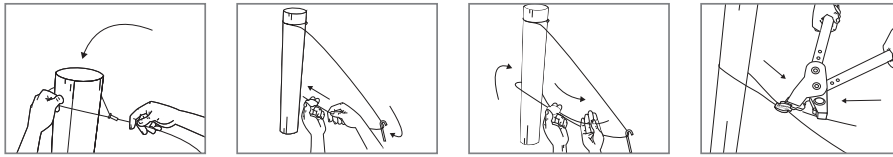
Concrete Post Kit



- Position collar tight to post to secure
- Apply tension with a tensioning tool

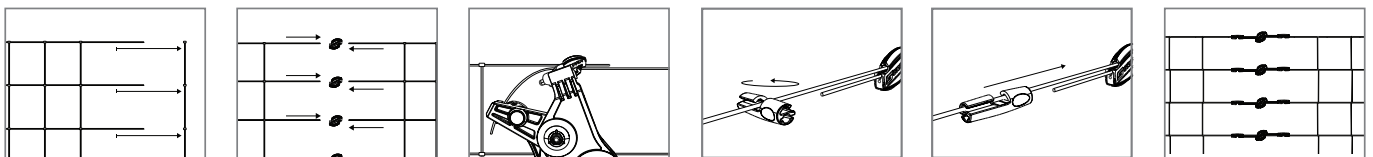


DPAK - Vineyard & Orchard Solutions



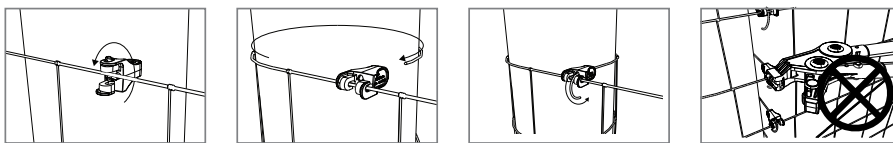
- Combine with an Anchor for a complete anchoring solution that's simple and fast to install.

Gripple Plus range - Join and tension stock fence



- Remove sufficient verticals prior to installation
- Apply and re-apply tension with a tensioning tool
- Trim excess wire with Wire Cutters, leaving a tail the size of the width of your hand to enable re-tensioning

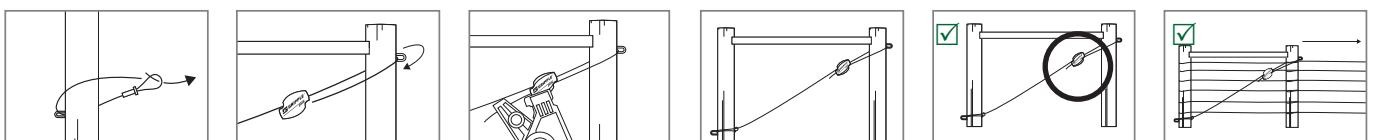
T-Clip - Installation



- On field fence, install the T-Clip as close to the end post as possible, inside the closest vertical
- Hand fasten T-Clip, never tension directly with tensioning tool
- To make the installation easier nearer the ground, install T-Clip upside down and bend wire upwards

DPAK & FPAK - Fencing Solutions

Best Practice



- Always 'choke' the wire rope tightly against the bottom of the post to avoid animals getting caught up in the fence
- Coupling a DPAK with an APEX Anchor will secure your fence, where space is limited



GripplE Ltd (Headquarters)

The Old West Gun Works
Savile Street East
Sheffield S4 7UQ
UK

T | 0800 018 4264
F | +44 (0)114 275 1155
E | info@gripplE.com

GripplE Europe SARL

1, rue du commerce
BP 37, 67211 Obernai Cedex,
France

T | +33 (0)3 88 95 44 95
F | +33 (0)3 88 95 08 78
E | frinfo@gripplE.com

GripplE GmbH

Loherstraße 4
35614 Asslar
Germany

T | +49 (0)6441 44447 – 00
E | deinfo@gripplE.com

GripplE Sp. z o.o.

ul. Chełmżyńska 70
04-247 Warsaw
Poland

T | +48 (0)22 635 62 08
E | plinfo@gripplE.com



CarmoFarm

Carmo France

Quai Lawton – Ponton n°5
33300 BORDEAUX

T | +33 (0)5 56 69 99 62
F | +33 (0)5 56 69 88 19
E | info@carmo.com

gripplE.com

frinfo@gripplE.com



WE ARE SOCIAL
FOLLOW OUR UPDATES